

CERTIFICATE OF LOCATION OF GOVERNMENT CORNER

NORTH QUARTER Corner of Section 26, Township 108N, Range 39W

5th Principal Meridian, State of Minnesota, County of MURRAY

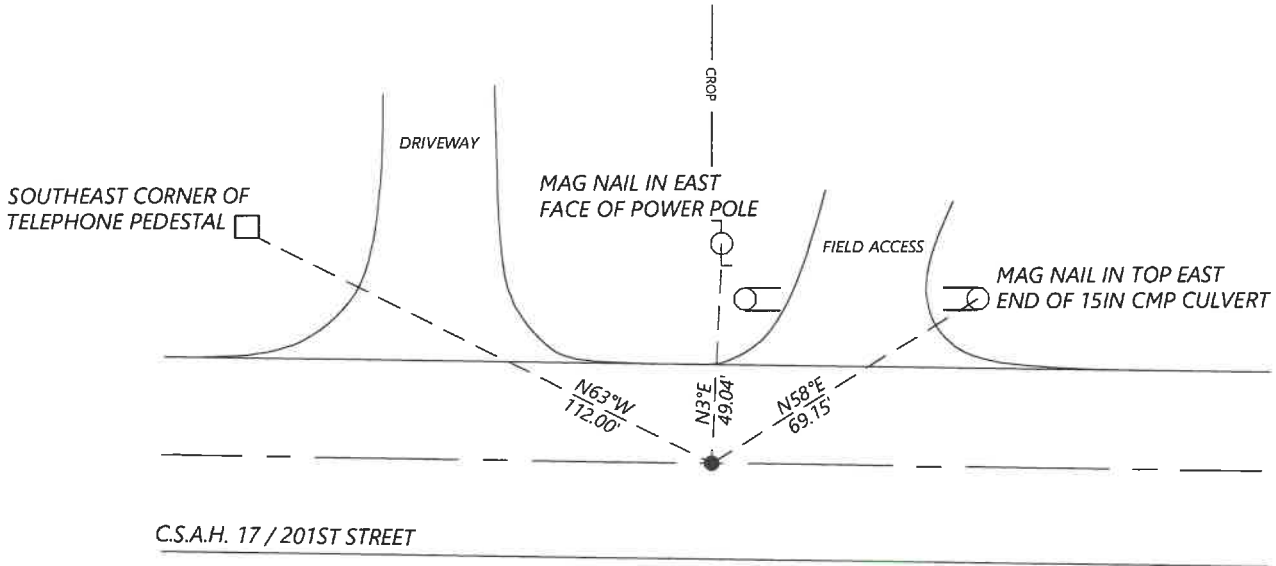
At the corner location shown on the sketch:

On 8/28/2020 found a MAG NAIL FLUSH IN CENTERLINE OF BITUMINOUS
DATE

left monument as found lowered monument removed monument (explain)

On _____ placed a _____
DATE

SKETCH OF REFERENCE TIES



N.T.S.

Statement of evidence for this corner location is on back of this page.

I hereby certify that this document was researched and prepared by me or under my direct supervision and that I am a licensed Land Surveyor under the laws of the State of Minnesota.

Signature [Handwritten Signature]

Date 6/17/2021 License No. 45874

Title:

- Land Surveyor Professional Engineer
- County Surveyor County Engineer

OFFICE OF THE COUNTY RECORDER

County of Murray

I hereby certify that this document was filed in the Co.

Recorder's office at _____ M. on the _____ day of _____ A.D. 20

County Recorder Karen Brown

by JUN 22 2021, Deputy

DOCUMENT NO. _____

Statement of Evidence:

North Quarter Corner of Section 26, Township 108 North, Range 39 West, 5th Principal Meridian, Murray County, Minnesota.

1861 July, GLO Notes: Set post in mound.

1924 July, Survey record for Section 26 shows that a 2x2in hub at the corner.
Nail & cap in brace post NE 62.27ft

Undated, Highway Department records show that they dug with a backhoe and found nothing.

20003 April, Road plans for CSAH 17 show the corner at station 132+64.67.

2016 March, A survey in Section 23 by Ben Madsen shows that he set a PK nail midway and online between the Southwest and Southeast section corners.

2017 November, A survey in Section 26 by Dennis Esplan shows that a mag nail was found at the corner.

2020 September, Westwood Professional Services searched and found a mag nail on centerline. The position fits well with 2016 and 2017 surveys and also fits the road stationing from the 2003 road plans. I accepted the found monument and set reference ties.

Analysis of the recovered data, field evidence and survey measurements, indicates that the monument found is the correct perpetuation of this corner. For additional information concerning this corner please contact Westwood Professional Services.